

# Notice to Mariners

No. 1 of 2024

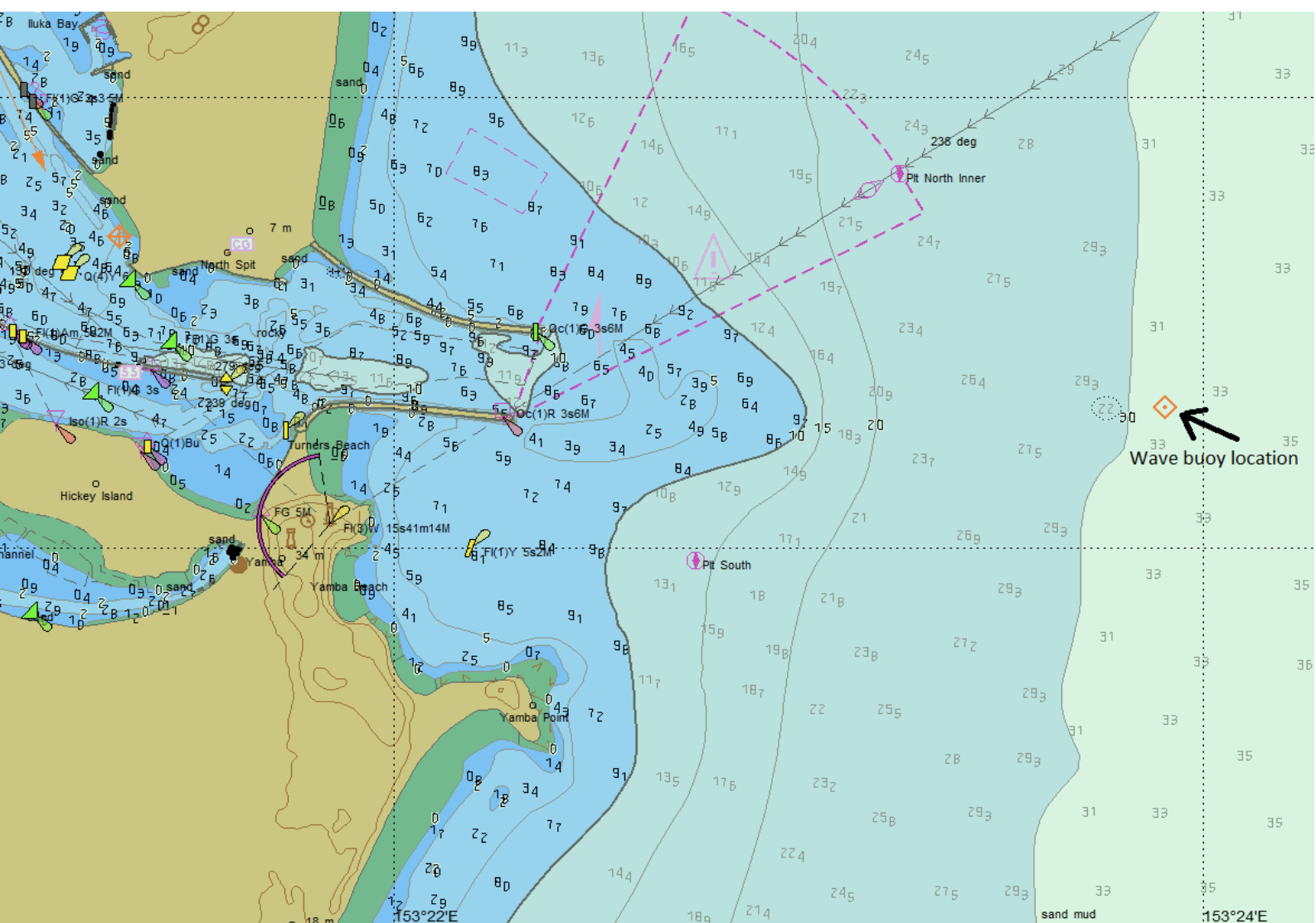
Port of Clarence River - Yamba – Wave buoy deployed off the Entrance to the Port

Mariners are advised that a wave buoy is located in position 29° 25.690` S 153° 23.925` E  
Approximately 1.4NM east of the entrance to the Clarence River.  
Light characteristics Fl(5)Y.20s & Fl.2s.



Mariners are advised to exercise caution when navigating in the vicinity and keep well clear of the buoy.

See below chartlet of approximate location of the wave buoy.



### Additional References

Nil

Charts Affected: **Aus 222**

Cancellation of Notice: Until advised.