

Water Quality Monitoring Buoys

Port users are advised of the establishment of water monitoring buoys in the inner and outer harbour at Port Kembla.

General description: Yellow buoy with solar flashing light.

Light Characteristics: Fl.Y

Locations: As per attached chartlet

The water quality monitoring buoys (WQMB) will remain in place for the duration of the berth works for the construction of the LNG import facility.

Mariners are advised to proceed with caution and while navigating in the vicinity of these buoys.

Attachments: Chartlet showing WQMB locations

Charts & Publications: All charts and Publications related to Port Kembla.

For a list of Notices currently in force, please visit our [website](#).

Sharad Bhasin
Harbour Master

21 June 2021

Port Authority of New South Wales

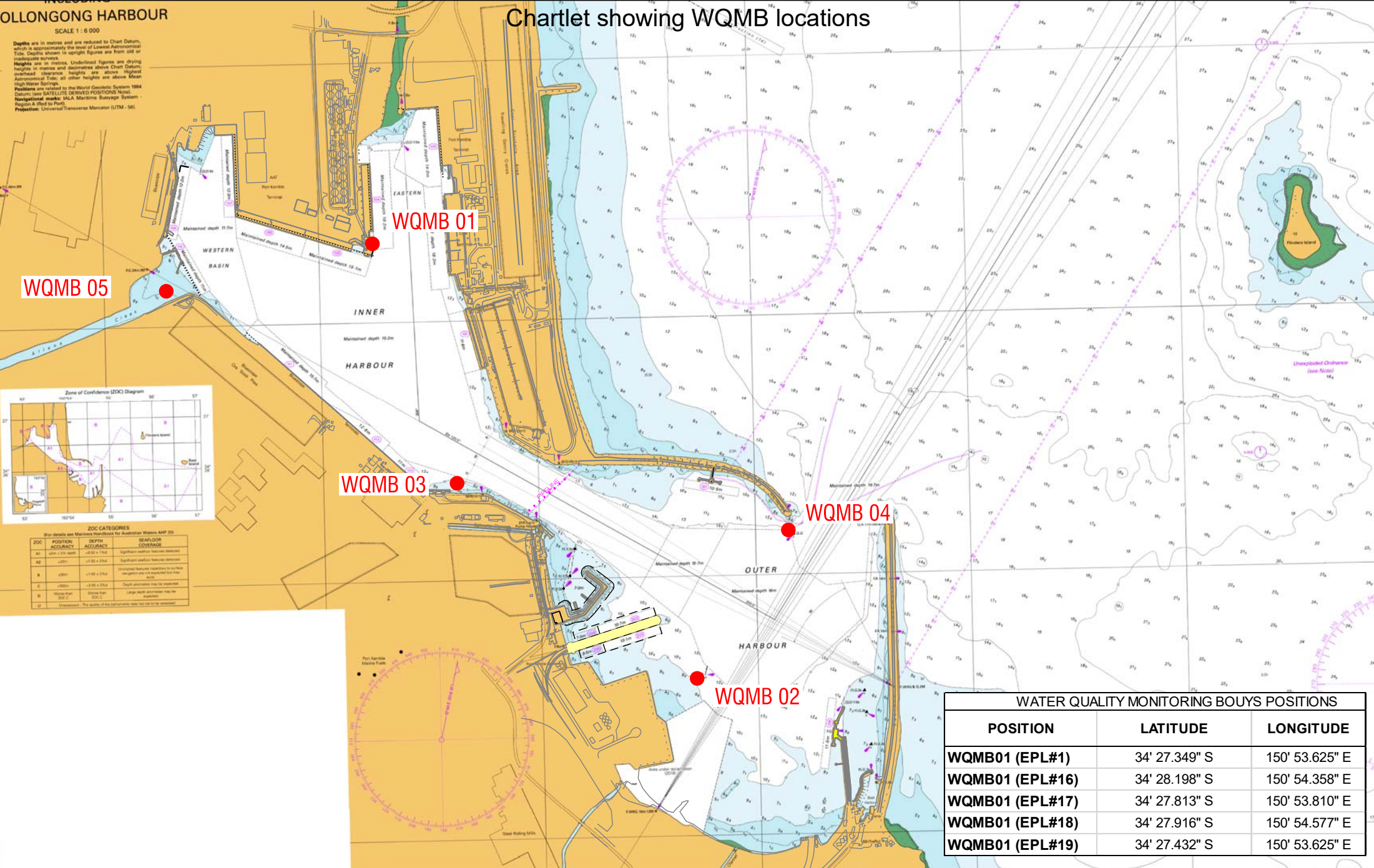
www.portauthoritynsw.com.au

OLLONGONG HARBOUR

SCALE 1 : 6 000

Depths are in metres and are reduced to Chart Datum, which is approximately the level of Lowest Astronomical Tide. Depths shown in upright figures are from old or inadequate surveys.
 Heights are in metres. Underlined figures are drying heights in metres and declivities above Chart Datum; overcast clearance heights are above Highest Astronomical Tide; all other heights are above Mean High Water Springs.
 Positions are related to the World Geodetic System 1984 datum; see SATELLITE DERIVED POSITIONS Note.
 Navigational marks: IALA Maritime Buoyage System - Region A (Red to Port).
 Projection: Universal Transverse Mercator (UTM - 56)

Chartlet showing WQMB locations



WQMB 05

WQMB 01

WQMB 03

WQMB 04

WQMB 02

WATER QUALITY MONITORING BOUYS POSITIONS

POSITION	LATITUDE	LONGITUDE
WQMB01 (EPL#1)	34' 27.349" S	150' 53.625" E
WQMB01 (EPL#16)	34' 28.198" S	150' 54.358" E
WQMB01 (EPL#17)	34' 27.813" S	150' 53.810" E
WQMB01 (EPL#18)	34' 27.916" S	150' 54.577" E
WQMB01 (EPL#19)	34' 27.432" S	150' 53.625" E

PLAN LIMITATION STATEMENT
 This plan has been prepared in accordance with accepted practice for the use only of Port Authority of New South Wales for a specific purpose. No Warranty or representation, expressed or implied is made to any other party regarding this survey and plan. This plan should not be relied upon for any other purpose or use by any party including Port Authority of New South Wales as the plan may not contain sufficient information for that purpose or use.
THIS NOTE IS AN INTEGRAL PART OF THIS PLAN
NOTE: STATED MEASUREMENTS ARE INDICATIVE ONLY AND SUBJECT TO SURVEY
 Copyright © Port Authority of New South Wales



PLAN PRODUCED ON MGA GRID

PORT KEMBLA
WATER QUALITY MONITORING BUOYS

DRAFTED BY: AK DATE: 17/06/2021

REQUESTED BY: Harbour Master: Sharad Bhasin DWG NO: RPKP013A