

Shore Power Community Notification

Upcoming site establishment and construction works

August 2025

Port Authority will begin site establishment works at White Bay this month in preparation for construction activities starting in September 2025. These works are essential to support the delivery of shore power infrastructure at White Bay Cruise Terminal.

What work are we doing?

The site establishment phase will include the installation of temporary site offices and fencing to secure the construction area. Following this, civil construction works will involve:

- Trenching and installation of conduits and pipes along Port Access Road and Robert Street, and at White Bay Cruise Terminal for electrical cables and seawater cooling system
- Construction of pits and foundations for the seawater cooling system, onshore power supply units and switching station
- Installation of power and earthing cables

Equipment and machinery to be used

The works will involve the use of:

- Temporary site offices and fencing
- Trucks delivering equipment and materials
- Excavators and trenching equipment
- Generators and compactors

What are we doing first?

We are establishing a site compound at White Bay between 18 August 2025 and 30 August 2025, weather permitting. Construction works are expected to start in September 2025 and continue until early 2026.

Construction hours

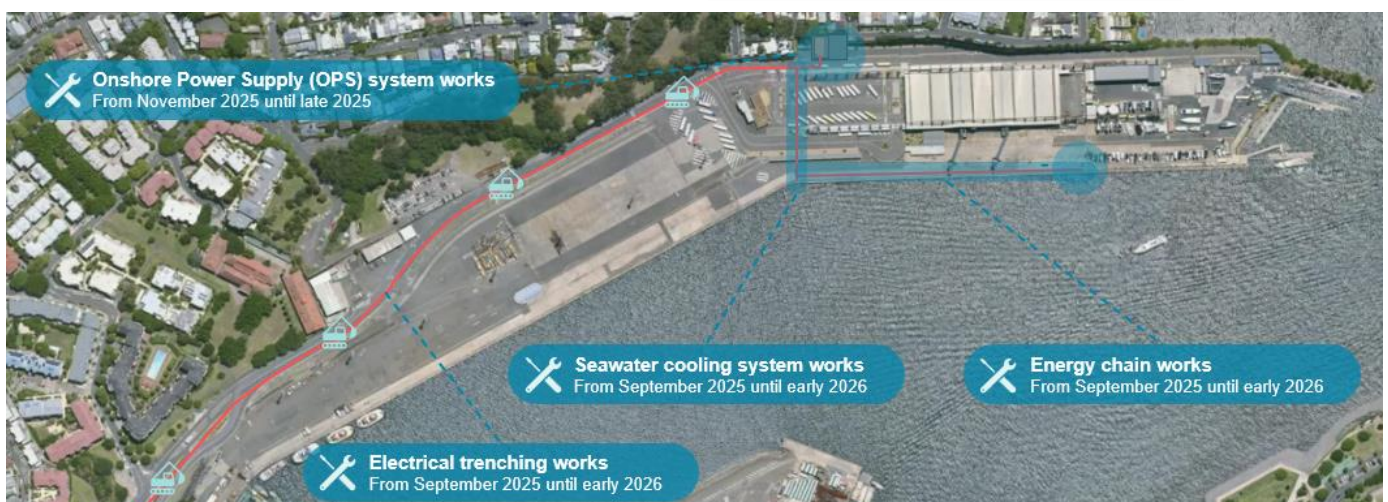
- Monday to Friday: 7:00am – 6:00pm
- Saturday (if required): 8:00am – 1:00pm

How will the work affect you?

Port Authority is committed to minimising disruption to the local community. During the works:

- Temporary traffic and pedestrian management measures will be implemented where necessary to ensure public safety.
- Machinery will be turned off when not in use to reduce noise.
- Dust suppression techniques will be applied.
- Work practices adjusted where possible to manage impacts.

We appreciate your patience as we undertake these important upgrades to connect shore power to White Bay Cruise Terminal. Learn more on our website.



Shore Power Project Milestones



August 2025

Site establishment including temporary site office, fencing and delivery of equipment and materials.



September 2025

Construction commences to install Shore power equipment and infrastructure at White Bay.



Early 2026

Expected completion of civil construction activities within the White Bay precinct.



What is Shore Power?

Once a cruise ship is safely alongside at berth, some of their engines and generators continue to run as ships require power to carry out their operations. Energy is required for the ship's lighting, heating, cooling, food preparation and communications. Shore power will enable cruise ships to plug-in to electricity supply from the shore; this allows them to power down their onboard diesel generators and auxiliary engines.

Why is this important?

This project is a first of its kind in Australia and will be offset by the purchase of renewable electricity. Shore power has the potential to avoid the release of approximately 4000 tonnes of carbon emissions every year. It not only helps improve air quality but has the potential to reduce noise and greenhouse gas emissions. It means cleaner air and quieter surroundings for our community.



When will it be ready?

We expect the project to be completed and ready for cruise ships by the end of 2026. Following the civil construction works at White Bay Cruise Terminal we will be connecting power supply from the Rozelle Ausgrid substation to the precinct. This work will commence in 2026.

Stay Connected

For more information on Shore Power visit our new engagement platform engage.portauthoritynsw.com.au or use the QR code. If you have an enquiry or complaint during these works, please call our 24/7 call centre.



02 9296 4962



enquiries@portauthoritynsw.com.au



www.portauthoritynsw.com.au

