

Local Marine Notice 009-2026

Port Botany

Offshore Waverider Buoy Updated Position

Mariners are advised that the offshore waverider buoy has been deployed at a new temporary position at 34° 02.7239' S 151° 15.0403 E, as shown on the chart below.

This unplanned change occurred due to unseasonably strong currents exceeding 3.5 knots, combined with operational limitations of the deployment vessel at the time.

The buoy will be returned to its designated position during the next scheduled annual service in March 2027.

Mariners are requested to navigate with caution in the vicinity of the buoy's temporary position and update voyage plans and navigation systems accordingly.

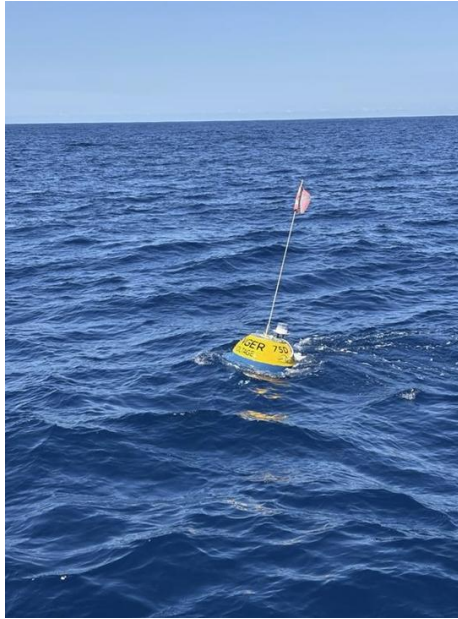
Details are as follows:

Instrument ID	Instrument Type	Instrument Latitude	Instrument Longitude	Flash Characteristics
BBDOU	Wave Buoy	34°02.7239' S	151°15.0403' E	Fl (5) Y.20s & Fl.2s

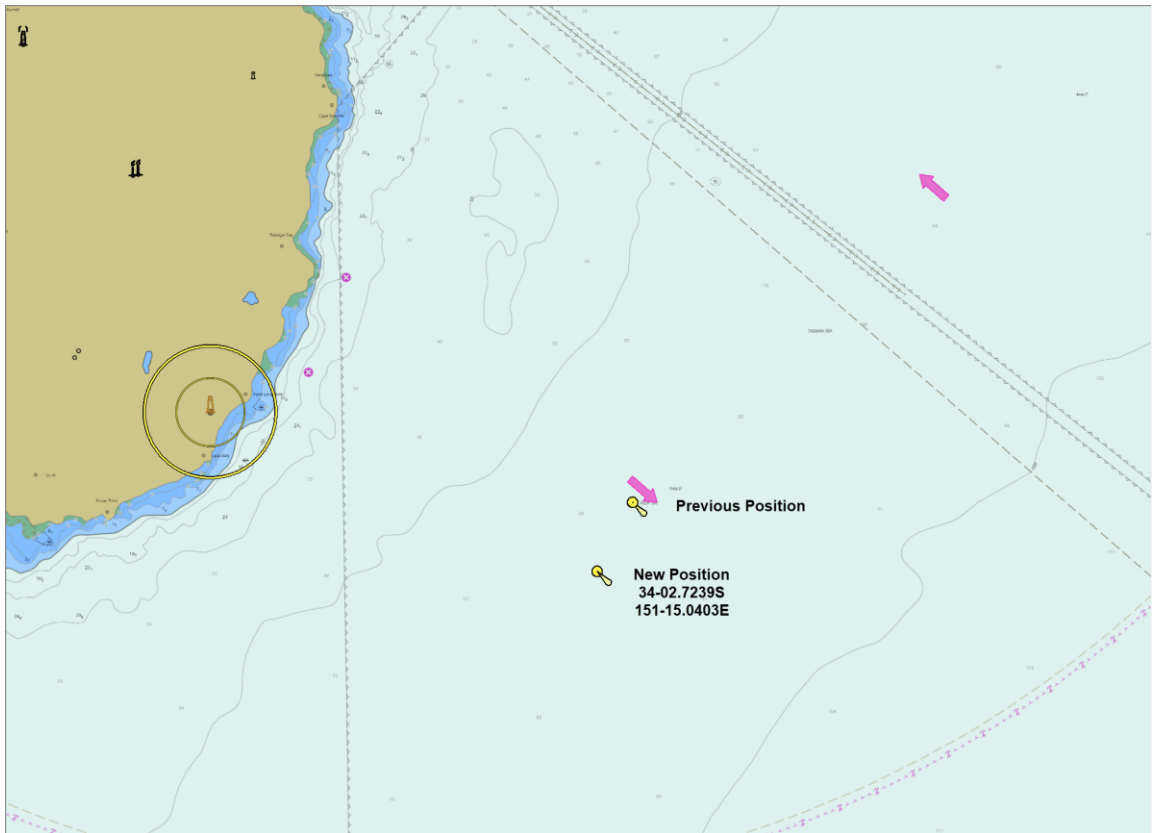
This update affects charts *Aus 198* and *Aus 808*.

For a list of Local Marine Notices currently in force, please see:

[Local Marine Notices | Port Authority New South Wales \(portauthoritynsw.com.au\)](https://portauthoritynsw.com.au)



Offshore waverider buoy.



New waverider buoy temporary position.