

Notice to Mariners

No. 2 of 2026

Newcastle Harbour – Seabed Sampling (Entrance to The Horseshoe)

Please be advised that Port of Newcastle Survey vessel will be conducting sampling of the seabed in the Hunter River Entrance channel & Horseshoe area.

- **Duration:** 13th to 14th May 2026 during daylight hours
- **Location:** The activities will take place in vicinity of Entrance channel and Horseshoe within the area highlighted in appended chartlet.
- **Nature of Activity:**
The activities will involve seabed sampling from the Port of Newcastle survey vessel.
Survey vessel will display appropriate day signals for a vessel Restricted in ability to Manoeuvre (RAM) during the survey.
The survey vessel will only operate within the designated channel area when there are no piloted vessel movements through the channel to avoid any disruptions to shipping.

Mariners are advised to exercise caution in this area during the specified period and keep clear of the survey vessel.

Maintain a listening watch on VHF Channel 09 for updates and communications.

Contact Information:

For further information or to report concerns, please contact Newcastle VTS on VHF Radio Ch 09.

Additional References - Nil

Charts Affected: AUS 207

Cancellation of Notice: 15 May 2026

Harbour Master Office- Newcastle & Yamba

12 May 2026



YAMBA | NEWCASTLE | SYDNEY | PORT KEMBLA | EDEN

www.portauthoritynsw.com.au

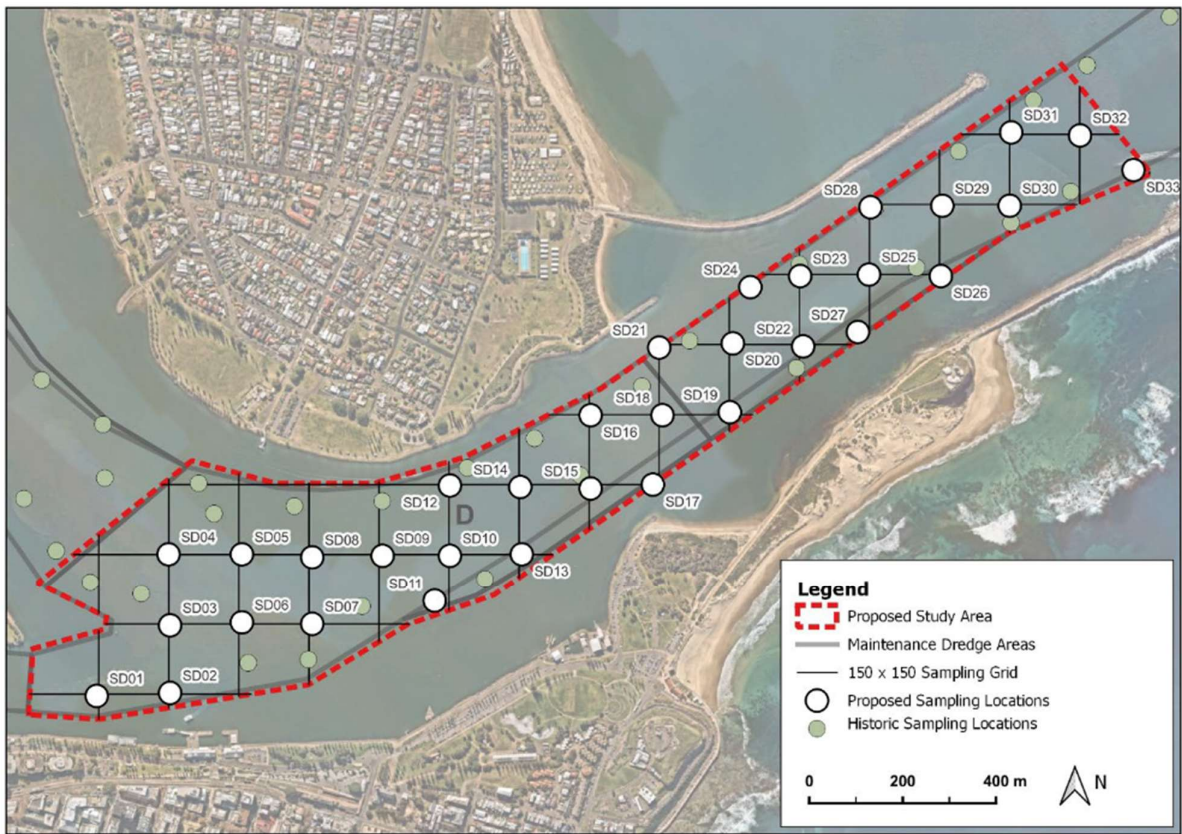


Figure 4-3: Sampling locations proposed for sampling as part of the sediment grainsize survey